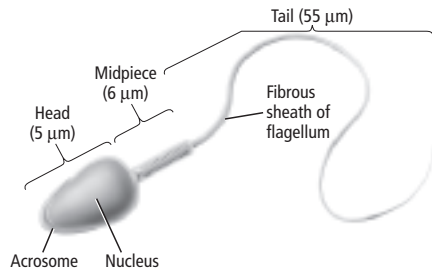


- 1** Which part of a sperm cell contains enzymes that weaken the plasma membrane of the egg?



- A head
- B midpiece
- C tail
- D acrosome

- 2** Through which do sperm travel after leaving the testes?

- A vas deferens
- B urethra
- C epididymis
- D seminal vesicles

- 3** Which structure does not contribute to semen?

- A bulbourethral gland
- B prostate gland
- C seminal vesicle
- D seminiferous tubule

- 4** Which hormone stimulates the production and secretion of testosterone in the testes?

- A FSH
- B Estrogen
- C LH
- D GnRH

- 5** Which describes ovulation?

- A A follicle ruptures and releases an egg.
- B An egg turns in the ovary.
- C The endometrium breaks down.
- D A sperm joins with an egg.

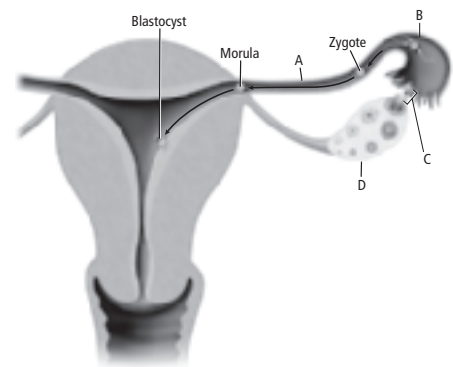
- 6** After ovulation, what does a follicle become?

- A the embryo
- B the corpus luteum
- C the zygote
- D the placenta

- 7** For how long can sperm survive in the female reproductive tract?

- A 12 hours
- B 24 hours
- C 48 hours
- D 72 hours

- 8** Where does fertilization take place in the below diagram?



- A A
- B B
- C C
- D D

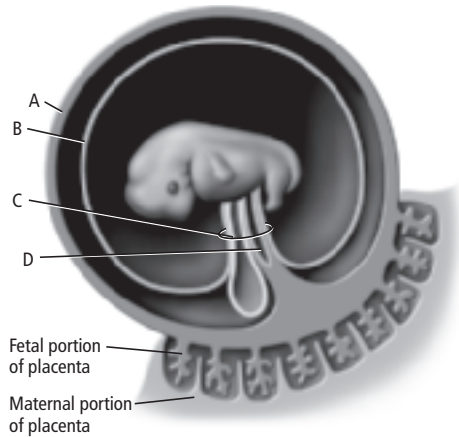
- 9** Where will the blastocyst implant itself and develop?

- A in the ovary
- B in the oviduct
- C in the uterus
- D in the vagina

- 10** Which sequence describes human development during the first week after fertilization?

- A egg→morula→blastocyst→zygote
- B egg→zygote→morula→blastocyst
- C morula→blastocyst→egg→zygote
- D morula→egg→zygote→blastocyst

Use the diagram below to answer questions 11 and 12.



11 Which extraembryonic membrane develops into the fetal portion of the placenta?

- A A
- B B
- C C
- D D

12 Identify the structure labeled C?

- A amnion
- B yolk sac
- C allantois
- D umbilical cord

13 Prior to puberty, the development of eggs is stopped at which phase of meiosis?

- A first meiotic division
- B second meiotic division
- C when polar bodies form
- D when a zygote forms

14 Which stimulates involuntary uterine muscles to contract?

- A human growth hormone
- B oxytocin
- C thyroxine
- D estrogen

15 Heavy cigarette smoking and use of alcohol throughout pregnancy usually increases the likelihood of _____.

- A multiple births
- B birth of a male child
- C a baby with a viral infection
- D a baby being born with medical problems