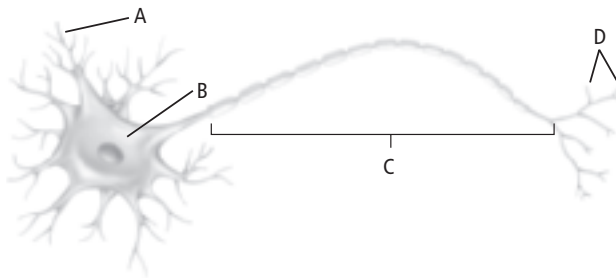


Use the illustration below to answer questions 1 and 2.

- 1 In the illustration below, what is the structure labeled B?



- A dendrite
- B axon
- C nucleus
- D cell body

- 2 Which structure in the illustration above receives impulses?

- A A
- B B
- C C
- D D

- 3 Predict what will happen as an impulse travels along the axon in the diagram below.

		Resting potential							
		1	1	1	1	1	1	1	1
Inside cell									
		2	2	2	2	2	2	2	2
		[Na ⁺]				[K ⁺]			
		2	2	2	2	2	2	2	2
Outside cell									
		1	1	1	1	1	1	1	1
		[Na ⁺]				[K ⁺]			

- A More potassium will be pumped into the cell.
- B More sodium will be pumped into the cell.
- C Potassium will be pumped out of the cell.
- D Sodium will be pumped out of the cell.

- 4 In which do impulses move fastest?

- A neurons that carry dull pain
- B myelinated neurons
- C nonmyelinated neurons
- D all neurons.

- 5 How do impulses move at a synapse?

- A by an electrical charge
- B by a chemical neurotransmitter
- C by touching the next neuron
- D by osmosis

- 6 Which would play a major role in making plans for choosing a career?

- A Central nervous system, because it analyzes and stores information.
- B Central nervous system, because it control reflexes.
- C Peripheral nervous system, because it relays information to skeletal muscles.
- D Peripheral nervous system, because it responds involuntarily.

- 7 Which structure would be most active if you were in a hot, dry desert without water?

- A medulla oblongata
- B pons
- C cerebrum
- D hypothalamus

- 8 What is true about reflexes?

- A They travel to the brain on sensory neurons.
- B They travel to the brain on motor neurons.
- C They are controlled voluntarily.
- D They are processed in the spinal cord and not in the brain.

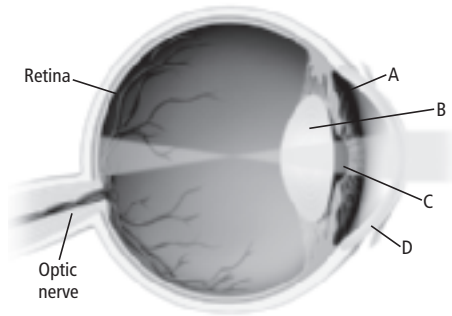
- 9 Fluid found in which structure of the inner ear stimulates hair cells in response to sound?

- A semicircular canals
- B cochlea
- C oval window
- D ear canal

- 10 Ears are adapted to respond to which form of energy?

- A vibrations
- B light
- C chemical
- D heat

- 11** Which structure in the illustration below inverts an image and focuses it on the retina?



- A** A
B B
C C
D D
- 12** What structure can change the diameter of the pupil in response to light energy?
- A** iris
B lens
C rods and cones
D cornea

- 13** What transmits impulses from pain, heat, and touch receptors in the skin and other body organs?

- A** interneurons
B motor neurons
C sensory neurons
D free nerve endings

- 14** How does illegal drug use affect dopamine?

- A** It is not reabsorbed at the synapse.
B It is reabsorbed at the synapse.
C It is not released at the synapse by the sending neuron.
D It does not bind to receptor sites on the receiving neuron.

- 15** What is characteristic of drug tolerance?

- A** psychological or physiological dependence on a drug
B craving for a drug
C need for more of a drug to attain a desired effect
D withdrawal effects